

Specifications

| Models | SX-125 XC | |
|---|-----------|-------------|
| Measurements | Metric | US |
| Working height maximum* | 40.10 m | 131 ft |
| Platform height maximum | 38.10 m | 125 ft |
| Horizontal reach maximum | 24.38 m | 80 ft |
| Below ground reach | 2.69 m | 8 ft 10 in |
| ▲ Platform length - 8 ft model | 0.91 m | 3 ft |
| ▲ Platform length - 6 ft model | 0.76 m | 2 ft 6 in |
| ▲ Platform width - 8 ft model | 2.44 m | 8 ft |
| ▲ Platform width - 6 ft model | 1.83 m | 6 ft |
| ▲ Height - stowed | 3.05 m | 10 ft |
| ▲ Length - stowed | 14.25 m | 46 ft 9 in |
| ▲ Length - transport (jib tucked under) | 12.19 m | 40 ft |
| ▲ Width - axles retracted | 2.49 m | 8 ft 2 in |
| ▲ Width - axles extended | 3.94 m | 12 ft 11 in |
| ▲ Wheelbase | 4.11 m | 13 ft 6 in |
| ▲ Ground clearance - center | 38.1 cm | 15 in |

Productivity

| | | |
|---|----------------------|------------|
| Maximum lift capacity - unrestricted | 300 kg | 660 lb |
| - restricted | 454 kg | 1,000 lb |
| Platform rotation | 160° | |
| Vertical jib rotation - up/down | 135° | |
| Turntable rotation | 360° continuous | |
| Turntable tailswing - axle retracted | 0.56 m | 1 ft 10 in |
| Turntable tailswing - axle extended | 1.02 m | 3 ft 4 in |
| Drive speed - stowed | 4.9 km/h | 3.0 mph |
| - raised (below 125 ft) | 0.6 km/h | 0.38 mph |
| Gradeability - stowed** | 40% | |
| Turning radius - axle retracted: inside | 8.03 m | 26 ft 4 in |
| outside | 9.96 m | 32 ft 8 in |
| Turning radius - axle extended: inside | 2.90 m | 9 ft 6 in |
| outside | 6.17 m | 20 ft 3 in |
| Controls | 12 V DC proportional | |
| Tyres - RT foam filled | 445D50/710HD | |

Power

| | | |
|-------------------------|--|--------|
| Power source | Deutz TD 2011 L04i, 74 hp (55 kW), Stage IIIA, air-cooled Deutz TD2.9 L4, 74 hp (55 kW), Stage IIIB, water-cooled | |
| Auxiliary power unit | 12 V DC | |
| Hydraulic tank capacity | 208 L | 55 gal |
| Fuel tank capacity | 151 L | 40 gal |

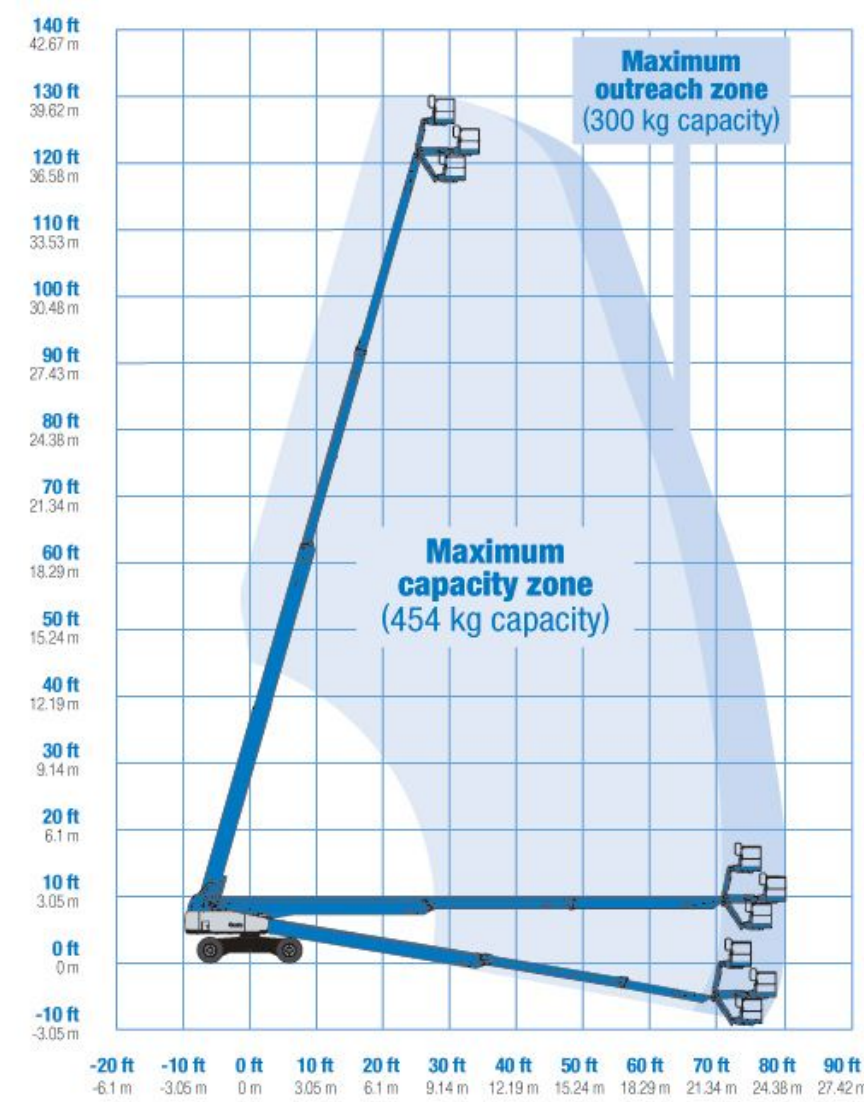
Weight***

| | | |
|-----|-----------|------------|
| 4WD | 20,700 kg | 45,636 lbs |
|-----|-----------|------------|

Standards Compliance

EU Directives: 2006/42/EC - Machinery (harmonized standard EN280); 2004/108/EC (EMC); 2000/14/EC (Outdoor Noise)

Range Of Motion SX-125 XC



* The metric equivalent of working height adds 2 m to platform height. U.S. adds 6 ft to platform height.

** Gradeability applies to driving on slopes. See operator's manual for details regarding slope ratings.

*** Weight will vary depending on options and/or country standards.

