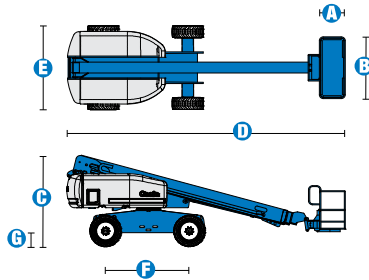


Specifications



MODELS		S™-60 X	
MEASUREMENTS	US	Metric	
Working height maximum*	66 ft	20.30 m	
Platform height maximum	60 ft	18.30 m	
Horizontal reach maximum	50 ft 10 in	15.48 m	
Below ground reach	5 ft 7 in	1.70 m	
A Platform length - 8 ft model	3 ft	.91 m	
Platform length - 6 ft model	2 ft 6 in	.76 m	
B Platform width - 8 ft model	8 ft	2.44 m	
Platform width - 6 ft model	6 ft	1.83 m	
C Height - stowed	8 ft 11 in	2.72 m	
Height - stowed Trax	9 ft 1 in	2.77 m	
D Length - stowed	27 ft 11 in	8.51 m	
Length - transport (jib tucked under)	—	—	
E Width (with standard tires)	8 ft 2 in	2.49 m	
Width - Trax	8 ft 6 in	2.59 m	
F Wheelbase	8 ft 2.5 in	2.50 m	
G Ground clearance - center	1 ft 2.5 in	.37 m	

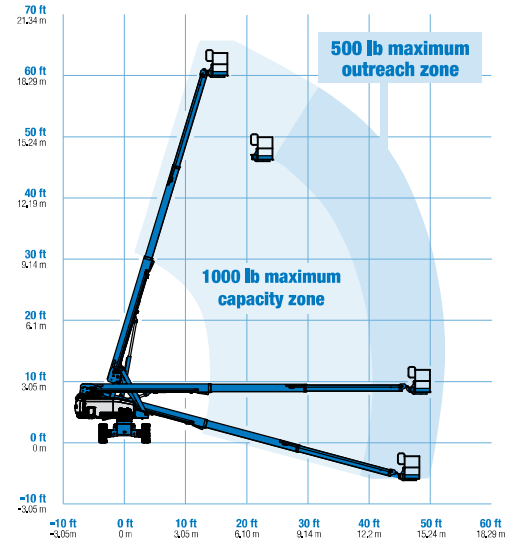
PRODUCTIVITY			
Lift capacity	500 lbs/1000 lbs	227 kg/454 kg	
Platform rotation	160°		
Vertical jib rotation	—		
Turntable rotation	360° continuous		
Turntable tailswing	4 ft	1.22 m	
Drive speed - 2WD stowed	4.0 mph	6.4 km/h	
Drive speed - 4WD stowed	3.0 mph	4.8 km/h	
Drive speed - Trax stowed	2.3 mph	3.7 km/h	
Drive speed - raised or extended	0.68 mph	1.1 km/h	
Gradeability - 2WD - stowed**	30%		
Gradeability - 4WD - stowed**	45%		
Turning radius - inside	7 ft 9 in	2.36 m	
Turning radius - outside	18 ft 2 in	5.54 m	
Controls	12 V DC proportional		
Tires - RT Lug	355/55D 625		

POWER			
Power source	Ford DSG-423 4 cylinder gas/LPG 75 hp (56 kW) Deutz D2011L03i 3 cylinder diesel 46 hp (34.3 kW) Perkins 404D-22 4 cylinder diesel 51 hp (38 kW) Deutz D2011L04i 4 cylinder turbo charged diesel 74 hp (55 kW)		
Auxiliary power unit	12 V DC		
Hydraulic tank capacity	45 gal	170 L	
Fuel tank capacity	35 gal	132 L	

WEIGHT***			
2WD	20,570 lbs	9,330 kg	
4WD	20,740 lbs	9,408 kg	
Trax	25,430 lbs	11,535 kg	

STANDARDS COMPLIANCE		ANSI A92.5, CSA B354.4, EN 280, AS 1418.10	
----------------------	--	--	--

RANGE OF MOTION S™-60 X



* The metric equivalent of working height adds 2 m to platform height. U.S. adds 6 ft to platform height.

** Gradeability applies to driving on slopes, see operator's manual for details regarding slope ratings.

*** Weight will vary depending on options and/or country standards.
**** S60Xc weight same as S65

Features

EASILY CONFIGURED TO MEET YOUR NEEDS

PLATFORM OPTIONS

- Steel 8 ft (2.44 m) (standard)
- Steel 6 ft (1.83 m)
- 8 ft (2.44 m) tri-entry

JIB OPTIONS

- Non-jib
- 5 ft (1.52 m) jib boom

POWER OPTIONS

- Ford gas/LPG 75 hp (56 kW)
- Deutz diesel 46 hp (34.3 kW)
- Perkins diesel 51 hp (38 kW)
- Deutz turbo diesel 74 hp (55 kW)

DRIVE OPTIONS

- 2WD
- 4WD

AXLE OPTIONS

- Active oscillation
- Non-oscillating

TIRE OPTIONS

- Rough terrain air-filled (standard)
- Rough terrain foam-filled
- Rough terrain non-marking (air or foam-filled)
- High flotation air-filled
- Sealant treated air-filled
- Track system QTS-R42 Loegering

STANDARD FEATURES

MEASUREMENTS

S™-60 X

- 66 ft (20.30 m) working height
- 50 ft 10 in (15.48 m) horizontal reach
- Up to 500 lb (227 kg) unrestricted and up to 1000 lb (454 kg) restricted lift capacity**

PRODUCTIVITY

- Self-leveling platform
- Hydraulic platform rotation
- Fully proportional Hall effect joystick controls
- Fuel select switch on platform and ground control panels (Gas/LPG models)
- Drive enable
- AC power cord to platform
- Tilt alarm
- Descent alarm
- Hour meter
- Horn
- 360° continuous turntable rotation
- Positive traction drive
- Two speed wheel motors

POWER

- 12 V DC auxiliary power
- Anti-restart engine protection
- Auto engine fault shutdown
- Swing out engine tray
- Deutz intake air heater



OPTIONS & ACCESSORIES

PRODUCTIVITY

- 750 lb (340 kg) capacity
- Platform swing gate
- Half-mesh platform inserts with swing gate
- Platform top auxiliary rail
- Arc Pro 275™ Heavy-Duty Welder package
- Welder Ready package
- Weld leads to platform
- Air line to platform
- Hydraulic oil cooler
- Fire resistant hydraulic oil
- Biodegradable hydraulic oil
- Basic hostile environment kit
- Deluxe hostile environment kit
- Aircraft protection package (6 ft platform)
- Thumb rocker steer
- Tool tray
- Alarm package
- Panel cradle package*
- Platform work lights
- Lockable platform control box covers
- Second battery
- Tow package
- FM safety approval**

POWER

- Engine gauge package
- AC generator packages (110V/-220V/50Hz, 3000W)
- Cold Weather Packages
- Diesel scrubber/spark arrestor muffler (catalytic muffler)
- LPG tank 33.5 lb (15.19 kg) capacity
- Air precleaner

* Available on select models

** Available only with Ford engine

Genie United States

18340 NE 76th Street
P.O. Box 97030
Redmond, Washington 98073-9730

Telephone **+1 (425) 881-1800**
Toll Free in USA/Canada **+1 (800) 536-1800**
Fax +1 (425) 883-3475

Genie Europe

The Maltings
Wharf Road
Grantham NG31 6BH
UK

Telephone **+44 (0)1476 584333**
Fax +44 (0)1476 584334

Email: AWP-InfoEurope@terex.com

Distributed By:

Effective Date: January, 2010. Product specifications and prices are subject to change without notice or obligation. The photographs and/or drawings in this document are for illustrative purposes only. Refer to the appropriate Operator's Manual for instructions on the proper use of this equipment. Failure to follow the appropriate Operator's Manual when using our equipment or to otherwise act irresponsibly may result in serious injury or death. The only warranty applicable to our equipment is the standard written warranty applicable to the particular product and sale and we make no other warranty, express or implied. Products and services listed may be trademarks, service marks or trade-names of Terex Corporation, Genie Industries, Inc. and/or their subsidiaries in the U.S.A. and many other countries and all rights are reserved. Terex is a Registered Trademark of Terex Corporation in the U.S.A. and many other countries. Genie is a Registered Trademark of Genie Industries, Inc. in the U.S.A. and many other countries. Genie is a Terex Company. © 2010 Terex Corporation.