

120HX MACHINE SPECIFICATIONS

PLATFORM HEIGHT	120 ft. 0 in. 36.6m
WORKING HEIGHT	128 ft. 0 in. 38.4m
PLATFORM DIMENSIONS	36" x 72" x 44" .91m x 1.83m x 1.12m
PLATFORM CAPACITY	500 lbs. 227 kg.
STOWED LENGTH	Working 52 ft. 4 in. 15.9m
	Transport 35 ft. 11 in. 10.9m
STOWED HEIGHT	10 ft. 4 in. 3.15m
	8 ft. 6 in. 2.59m
WIDTH	Axles retracted 10 ft. 10 in. 3.30m
	Axles extended 34 in. .86m
TAILSWING	34 in. .86m
GROSS WEIGHT (approx)	(1) 43,500 lbs. (1) 19,750 kg.
	76 HP @ 2500 rpm

MAIN PUMP OUTPUT	Piston	34 gpm @ 2500 rpm 128 L/min.
	Gear	12 gpm @ 2500 rpm 45 L/min.
AUXILIARY PUMP OUTPUT		4.75 gpm 18 L/min.
HYDRAULIC TANK CAPACITY		50 U.S. gals. 189 L
FUEL TANK CAPACITY		26 U.S. gals. 98 L
TRAVEL SPEED		2.75 mph 4.43 km/hr
	GRADEABILITY	40% 22°
OUTSIDE TURNING RADIUS		18 ft. 9.75 in. 5.73m
	HORIZONTAL REACH	60 ft. 0 in. 18.3 m
TIRES (Foam Filled)		445/65R - 22.5
WHEELBASE		11 ft. 4.5 in. 3.47m
	GROUND CLEARANCE	12 in. 33 cm

(1)GVW may increase to meet country standards or with the addition of optional equipment.

THE BEST PROTECTION IN THE BUSINESS

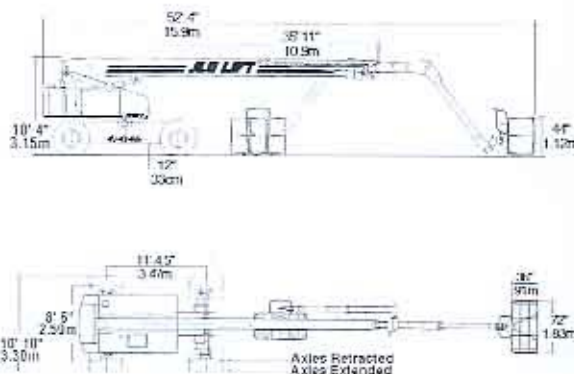
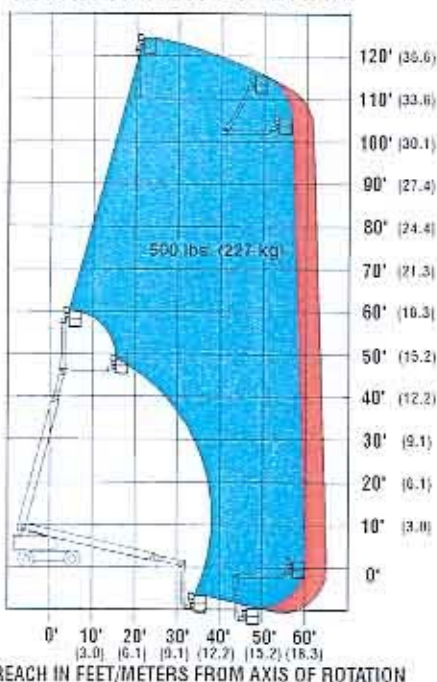


The JLG ONE&FIVE Warranty covers the entire machine for one full year and all specified major structural components for five full years. This warranty—the industry's best—represents JLG's commitment to superior quality standards.

SERVICE AND SUPPORT NEARBY... IN EVERY CORNER OF THE WORLD

Along with a high level of engineering expertise, you can depend on JLG's commitment to customer satisfaction. We ship 90% of in-stock parts orders received from JLG distributors within a 24-hour period—a level of service envied by most access and lift equipment manufacturers. Service support is available from factory-trained specialists throughout our extensive distributor network.

120HX REACH DIAGRAM



型号 Model	: JLG 120HX (Diesel 76HP)	
工作高度 Working Height	: 38.4M	工作台尺寸 Platform Size
工作台高度 Platform Height	: 36.6M	行走速度 Drive Speed
水平伸出 Horizontal Outreach	: 18.3M	攀登度 Gradeability
载重量 Platform Capacity	: 227Kg	重量 Weight
机身尺寸 (LxWxH) Vehicle Dimension	: 15.9 M (Working) X 3.30 M (Axles extended) X 3.15 M 10.9 M (Transport) X 2.59 M (Axles retracted) X 3.15 M	
連營有限公司 LINK ATTEMPT LIMITED TEL: 2494 0788 FAX: 2426 6509		

PART NO.: 3131008